



Yashoda Shikshan Prasarak Mandal's

**YASHODA TECHNICAL CAMPUS, SATARA**

NH-4, Wadhe Phata, Satara. Tele Fax- 02162-271238/39/40

Website- [www.yes.edu.in](http://www.yes.edu.in), Email-[registrar\\_ytc@yes.edu.in](mailto:registrar_ytc@yes.edu.in)

Approved by AICTE / PCI New Delhi, Govt. of Maharashtra (DTE, Mumbai)

Affiliated to DBATU Lonere & Shivaji University, Kolhapur/ MSBTE, Mumbai.

**Institute Code – 6757**

**Prof. Dasharath Sagare**  
Founder, President

**Prof. Ajinkya Sagare**  
Vice-President

**Dr. Vivekkumar Redasani**  
Director

## **NAAC SSR II CYCLE**

**Criterion IV**



Yashoda Shikshan Prasarak Mandal's

**YASHODA TECHNICAL CAMPUS, SATARA**

NH-4, Wadhe Phata, Satara. Tele Fax- 02162-271238/39/40

Website- [www.yes.edu.in](http://www.yes.edu.in), Email-[registrar\\_ytc@yes.edu.in](mailto:registrar_ytc@yes.edu.in)

Approved by AICTE / PCI New Delhi, Govt. of Maharashtra (DTE, Mumbai)

Affiliated to DBATU Lonere & Shivaji University, Kolhapur/ MSBTE, Mumbai.

**Institute Code – 6757**

**Prof. Dasharath Sagare**  
Founder, President

**Prof. Ajinkya Sagare**  
Vice-President

**Dr. Vivekkumar Redasani**  
Director

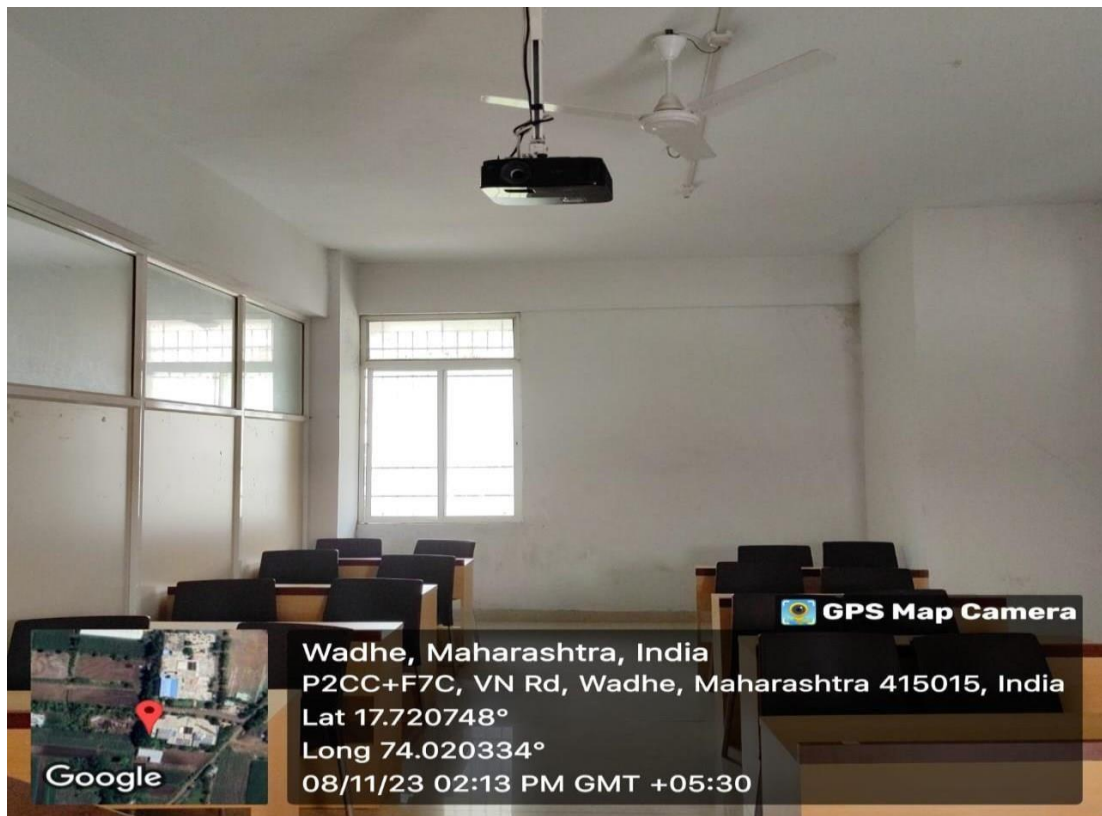
## INDEX

QM No.	QM NAME	Page No.
<b>4.1 Physical Facilities</b>		
1	Classrooms	1-2
2	Faculty rooms	3-4
3	Laboratories	5-6
4	Common Facilities Centre	7-8
5	Machine Room	9-10
6	Training and placement cell	11
7	Cultural Activities	12-13
8	Gymnasium	14
9	ICT Facilities	15-17
10	Sport - Outdoor Games and Indoor games	18-19
11	NSS Activity	20
12	Yoga Centre	21
13	Drug Museum	22
14	Medicinal Plant Garden	23
15	Stationery Store	24
16	Canteen Facility	25
17	Area Statement of all courses	26-30

# 1. Classroom



  
DIRECTOR  
Yashoda Technical Campus  
Satara



  
DIRECTOR  
Yashoda Technical Campus  
Satara

## 2. Faculty room



  
DIRECTOR  
Yashoda Technical Campus  
Satara



  
**DIRECTOR**  
Yashoda Technical Campus  
Satara

### 3. Laboratories



*[Signature]*  
DIRECTOR  
Yashoda Technical Campus  
Satara



*[Signature]*  
DIRECTOR  
Yashoda Technical Campus  
Satara



#### 4. Common Facilities Centre



  
DIRECTOR  
Yashoda Technical Campus  
Satara



*[Signature]*  
DIRECTOR  
Yashoda Technical Campus  
Satara

## 5. Machine Room

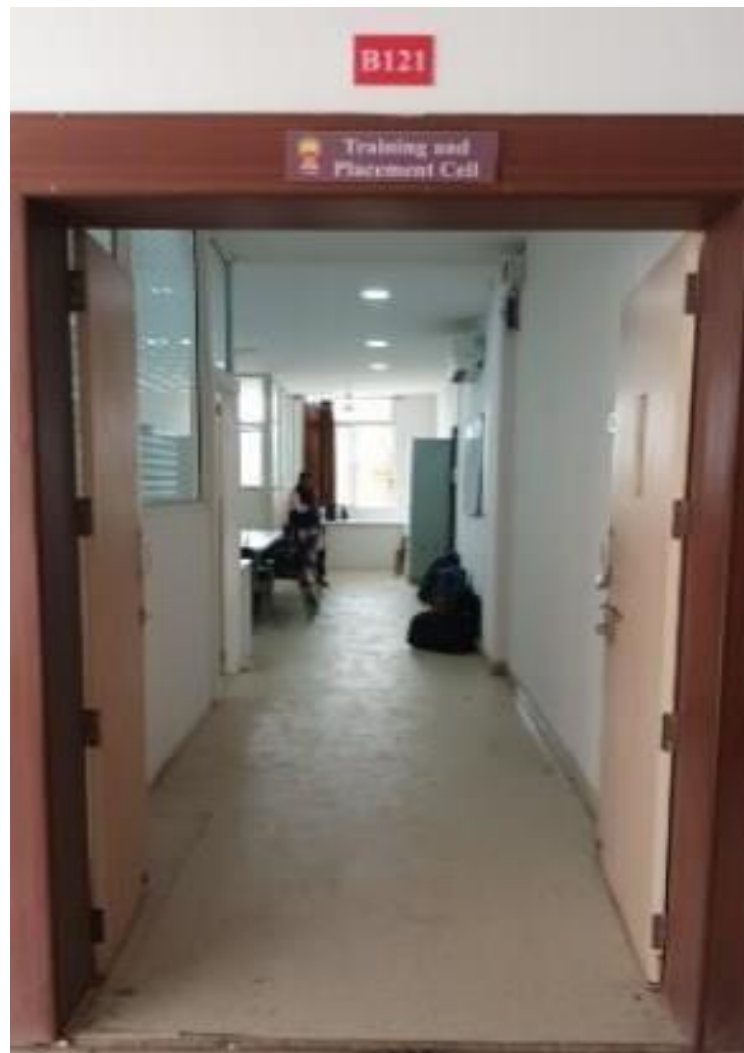


  
DIRECTOR  
Yashoda Technical Campus  
Satara



*Yashoda*  
DIRECTOR  
Yashoda Technical Campus  
Satara

## 6. Training and placement cell



  
DIRECTOR  
Yashoda Technical Campus  
Satara

## 7. Cultural Activities



*Yashoda*  
DIRECTOR  
Yashoda Technical Campus  
Satara



  
DIRECTOR  
Yashoda Technical Campus  
Satara

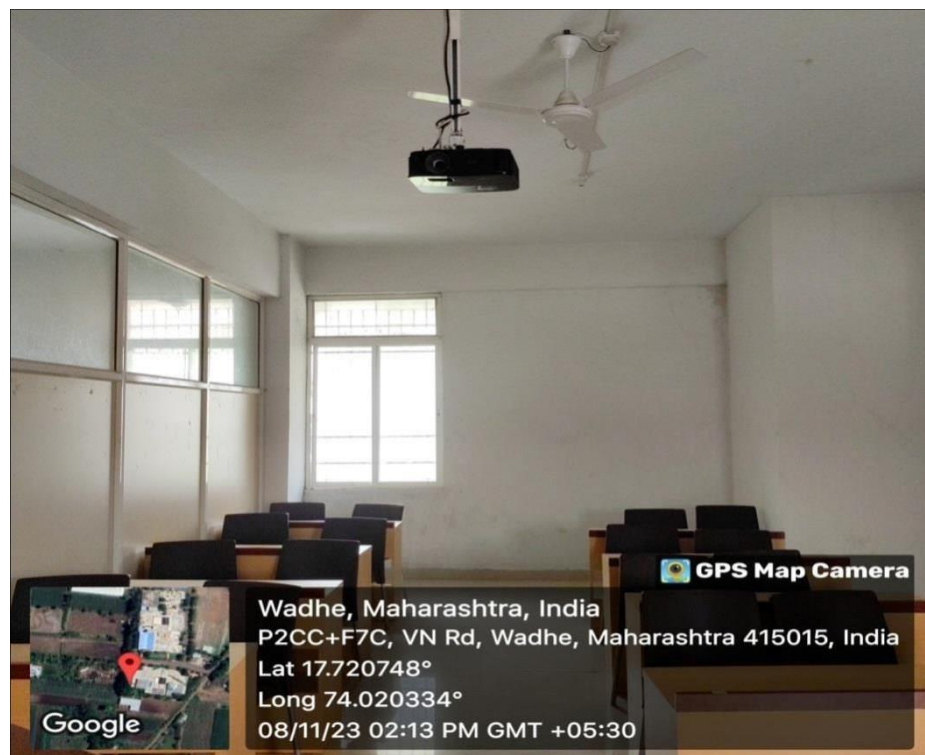
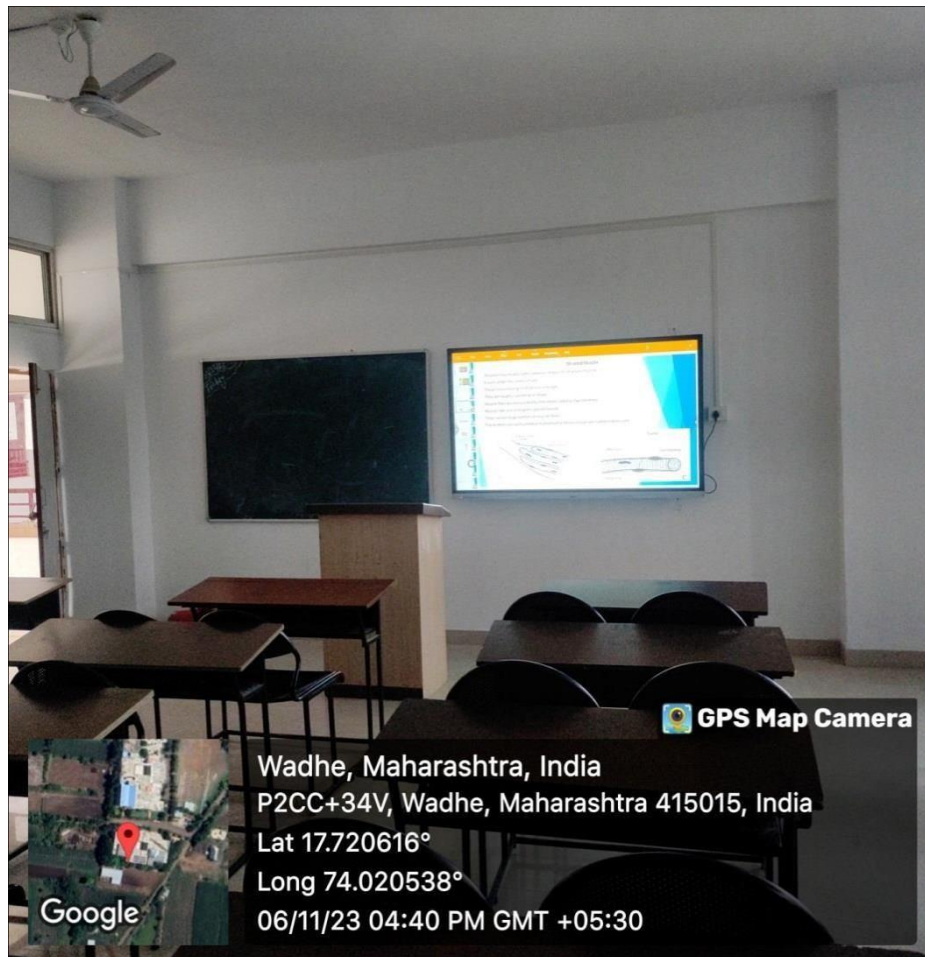
## 8. Gymnasium



  
DIRECTOR  
Yashoda Technical Campus  
Satara



## 9. ICT Facilities



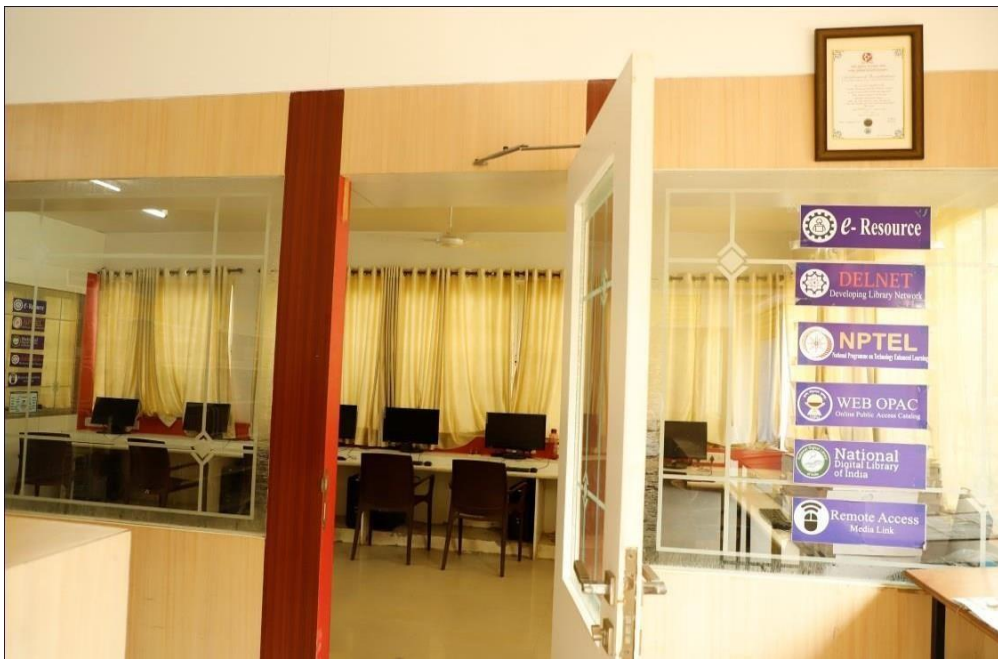
  
DIRECTOR  
Yashoda Technical Campus  
Satara



Seminar Hall



  
DIRECTOR  
Yashoda Technical Campus  
Satara



Wadhe, Maharashtra, India  
 P2CC+34V, Wadhe, Maharashtra 415015, India  
 Lat 17.720607°  
 Long 74.020535°  
 06/11/23 04:45 PM GMT +05:30



  
 DIRECTOR  
 Yashoda Technical Campus  
 Satara

## 10. Sport - Outdoor Games and Indoor games





  
**DIRECTOR**  
Yashoda Technical Campus  
Satara

## 11. NSS Activity



**Blood Donation Camp**



### Tree Plantation



*[Signature]*  
DIRECTOR  
Yashoda Technical Campus  
Satara

## 12. Yoga Centre



  
DIRECTOR  
Yashoda Technical Campus  
Satara

### 13. Drug Museum



  
DIRECTOR  
Yashoda Technical Campus  
Satara



## 14. Medicinal Plant Garden



  
DIRECTOR  
Yashoda Technical Campus  
Satara

## 15. Stationery Store



  
DIRECTOR  
Yashoda Technical Campus  
Satara

## 16. Canteen Facility



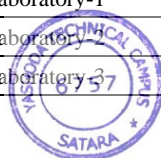
  
DIRECTOR  
Yashoda Technical Campus  
Satara

Date : 1/27/2024

To,  
President,  
YSPM's Yashoda Technical Campus,  
NH-4, Wadhe Phata, Satara.

Detailed Area Statement

Sr. No	Room No.	Building Name	Building Number	Room type (mention class room / lab / Toilet etc)	Carpet area (in sq. m)	Department	Readiness of Flooring	Readiness of Walls and Painting	Readiness of Electrification and lighting	Readiness of Furniture & Fixtures
<b>B.Pharmacy - Instructional Area</b>										
1	211	A	1	B. Pharm Class Room - 1	97.84	B. Pharm.	Yes	Yes	Yes	Yes
2	212	A	1	B. Pharm Class Room - 2	97.84	B. Pharm.	Yes	Yes	Yes	Yes
3	312	A	1	B. Pharm Class Room - 3	95.78	B. Pharm.	Yes	Yes	Yes	Yes
4	313	A	1	B. Pharm Class Room - 4	95.78	B. Pharm.	Yes	Yes	Yes	Yes
5	217	A	1	Class Room	76.86	B. Pharm.	Yes	Yes	Yes	Yes
6	218	A	1	Class Room	76.86	B. Pharm.	Yes	Yes	Yes	Yes
7	107	A	1	B. Pharm Laboratory - 1	102.36	B. Pharm.	Yes	Yes	Yes	Yes
8	108	A	1	B. Pharm Laboratory - 2	102.70	B. Pharm.	Yes	Yes	Yes	Yes
9	111	A	1	B. Pharm Machine Room- 3	97.84	B. Pharm.	Yes	Yes	Yes	Yes
10	112	A	1	B. Pharm Laboratory - 3	97.84	B. Pharm.	Yes	Yes	Yes	Yes
11	119	A	1	B. Pharm Laboratory - 4	76.95	B. Pharm.	Yes	Yes	Yes	Yes
12	208	A	1	B. Pharm Laboratory - 5	102.35	B. Pharm.	Yes	Yes	Yes	Yes
13	209	A	1	B. Pharm Laboratory - 6	102.70	B. Pharm.	Yes	Yes	Yes	Yes
14	305	A	1	B. Pharm Inst. Room - 7	92.74	B. Pharm.	Yes	Yes	Yes	Yes
15	306	A	1	B. Pharm Laboratory - 8	77.58	B. Pharm.	Yes	Yes	Yes	Yes
16	307	A	1	B. Pharm Laboratory - 9	77.58	B. Pharm.	Yes	Yes	Yes	Yes
17	309	A	1	B. Pharm Laboratory - 10	102.70	B. Pharm.	Yes	Yes	Yes	Yes
18	318 & 319	A	1	Seminar Hall	248.08	B. Pharm.	Yes	Yes	Yes	Yes
19	316	A	1	B. Pharm Laboratory - 11	102.70	B. Pharm.	Yes	Yes	Yes	Yes
<b>Total (B)</b>					<b>1925.08</b>					
<b>M.Pharmacy - Instructional Area</b>										
20	202	A	1	PG PH Class Room - 2	42.52	M. Pharm.	Yes	Yes	Yes	Yes
21	203	A	1	PG PH Class Room - 3	42.52	M. Pharm.	Yes	Yes	Yes	Yes
22	204	A	1	Sick Room	42.52	M. Pharm.	Yes	Yes	Yes	Yes
23	104	A	1	PG PH Research Laboratory -	77.16	M. Pharm.	Yes	Yes	Yes	Yes
24	105	A	1	PG PH Laboratory - 2	77.16	M. Pharm.	Yes	Yes	Yes	Yes
25	205	A	1	PG PH Research Laboratory -	77.16	M. Pharm.	Yes	Yes	Yes	Yes
26	206	A	1	PG PH Laboratory - 4	77.16	M. Pharm.	Yes	Yes	Yes	Yes
27	320	A	1	M. Pharm Animal House	150.00	M. Pharm.	Yes	Yes	Yes	Yes
<b>Total (C)</b>					<b>586.20</b>					
<b>UG Engineering - Instructional Area</b>										
28	103	B	2	UG Laboratory-1	75.00	Civil	Yes	Yes	Yes	Yes
29	114	B	2	UG Laboratory-2	75.00	Civil	Yes	Yes	Yes	Yes
30	115	B	2	UG Laboratory-3	75.00	Civil	Yes	Yes	Yes	Yes



Yashoda Technical Campus  
Satara

31	117.1	B	2	UG Laboratory-4	75.00	Civil	Yes	Yes	Yes	Yes
32	105	D	4	UG Laboratory-5	66.25	Civil	Yes	Yes	Yes	Yes
33	106	D	4	UG Laboratory-6	66.25	Civil	Yes	Yes	Yes	Yes
34	125	B	2	UG Laboratory-7	75.00	Mechanical	Yes	Yes	Yes	Yes
35	127	B	2	UG Laboratory-8	75.00	Mechanical	Yes	Yes	Yes	Yes
36	129	B	2	UG Laboratory-9	100.00	Mechanical	Yes	Yes	Yes	Yes
37	130	B	2	UG Laboratory-10	100.00	Mechanical	Yes	Yes	Yes	Yes
38	102	D	2	UG Laboratory-11	68.58	Mechanical	Yes	Yes	Yes	Yes
39	103	D	2	UG Laboratory-12	68.58	Mechanical	Yes	Yes	Yes	Yes
40	202	B	2	UG Laboratory-13	75.00	E&Tc	Yes	Yes	Yes	Yes
41	205	B	2	UG Laboratory-14	75.00	E&Tc	Yes	Yes	Yes	Yes
42	212.2	B	2	UG Laboratory-15	68.00	E&Tc	Yes	Yes	Yes	Yes
43	213	B	2	UG Laboratory-16	75.00	E&Tc	Yes	Yes	Yes	Yes
44	214.2	B	2	UG Laboratory-17	75.25	E&Tc	Yes	Yes	Yes	Yes
45	215	B	2	UG Laboratory-18	75.00	E&Tc	Yes	Yes	Yes	Yes
46	221	B	2	UG Laboratory-19	90.78	CSE	Yes	Yes	Yes	Yes
47	225	B	2	UG Laboratory-20	75.00	CSE	Yes	Yes	Yes	Yes
48	226.1	B	2	UG Laboratory-21	66.00	CSE	Yes	Yes	Yes	Yes
49	227	B	2	UG Laboratory-22	75.00	CSE	Yes	Yes	Yes	Yes
50	228.1	B	2	UG Laboratory-23	66.00	CSE	Yes	Yes	Yes	Yes
51	229.1	B	2	UG Laboratory-24	66.00	CSE	Yes	Yes	Yes	Yes
52	326	B	2	UG Laboratory-25	75.00	Elect	Yes	Yes	Yes	Yes
53	328	B	2	UG Laboratory-26	75.00	Elect	Yes	Yes	Yes	Yes
54	329.1	B	2	UG Laboratory-27	71.92	Elect	Yes	Yes	Yes	Yes
55	330	B	2	UG Laboratory-28	100.00	Elect	Yes	Yes	Yes	Yes
56	335	B	2	UG Laboratory-29	75.00	Elect	Yes	Yes	Yes	Yes
57	337	B	2	UG Laboratory-30	75.00	Elect	Yes	Yes	Yes	Yes
58	234	B	2	UG Laboratory-31	75.00	AI & DS	Yes	Yes	Yes	Yes
59	236	B	2	UG Laboratory-32	75.00	AI & DS	Yes	Yes	Yes	Yes
60	303	B	2	UG Laboratory-33	75.00	FE	Yes	Yes	Yes	Yes
61	306	B	2	UG Laboratory-34	75.00	FE	Yes	Yes	Yes	Yes
62	314	B	2	UG Laboratory-35	75.00	FE	Yes	Yes	Yes	Yes
63	316	B	2	UG Laboratory-36	75.00	FE	Yes	Yes	Yes	Yes
64	302	B	2	UG Classroom-1	87.48	FE	Yes	Yes	Yes	Yes
65	304	B	2	UG Classroom-2	75.00	FE	Yes	Yes	Yes	Yes
66	305	B	2	UG Classroom-3	75.00	FE	Yes	Yes	Yes	Yes
67	111	B	2	UG Classroom-4	75.86	Civil	Yes	Yes	Yes	Yes
68	131	B	2	UG Classroom-5	75.87	Mechanical	Yes	Yes	Yes	Yes
69	132	B	2	UG Classroom-6	75.87	Civil / Mech	Yes	Yes	Yes	Yes
70	209	B	2	UG Classroom-7	75.86	E&Tc	Yes	Yes	Yes	Yes
71	210	B	2	UG Classroom-8	75.86	E&Tc / CSE	Yes	Yes	Yes	Yes
72	211.2	B	2	UG Classroom-9	68.00	AI & DS	Yes	Yes	Yes	Yes
73	230	B	2	UG Classroom-10	75.86	CSE	Yes	Yes	Yes	Yes
74	331	B	2	UG Classroom-11	75.86	Elect	Yes	Yes	Yes	Yes
75	310	B	2	UG Classroom-12	75.86	CSE	Yes	Yes	Yes	Yes
76	311	B	2	UG Classroom-13	75.86	Elect / AI&DS	Yes	Yes	Yes	Yes
77	211.1	B	2	Tutorial Room - 1	34.00	UG	Yes	Yes	Yes	Yes
78	212.1	B	2	Tutorial Room - 2	34.00	UG	Yes	Yes	Yes	Yes
79	226.2	B	2	Tutorial Room - 3	34.00	UG	Yes	Yes	Yes	Yes



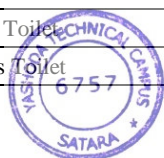
80	222	B	2	Tutorial Room - 4	36.75	UG	Yes	Yes	Yes	Yes
81	309	B	2	Drawing Hall / CAD Ceter	150.00	UG	Yes	Yes	Yes	Yes
82	133	B	2	Seminar Hall	150.00	UG	Yes	Yes	Yes	Yes
83	101.1	D	4	Workshop	200.00	UG	Yes	Yes	Yes	Yes
84	101.2	D	4	Additional Workshop	200.00	UG	Yes	Yes	Yes	Yes
<b>Total (D)</b>					<b>4549.60</b>					
<b>PG Engineering - Instructional Area</b>										
85	212.1	B	2	Class Room - 1	42.00	M. Tech	Yes	Yes	Yes	Yes
86	212.2	B	2	Class Room - 2	40.00	M. Tech	Yes	Yes	Yes	Yes
87	211.2	B	2	PG Mech Laboratory	68.00	M. Tech	Yes	Yes	Yes	Yes
88	214.2	B	2	PG Mech Research Laboratory	75.25	M. Tech	Yes	Yes	Yes	Yes
<b>Total (E)</b>					<b>225.25</b>					
<b>PG MBA - Instructional Area</b>										
89	312	B	2	MBA Class Room - 1	100.00	MBA	Yes	Yes	Yes	Yes
90	313	B	2	MBA Class Room - 2	100.00	MBA	Yes	Yes	Yes	Yes
91	315.2	B	2	MBA Tutorial Room	34.00	MBA	Yes	Yes	Yes	Yes
92	301.1	B	2	MBA Seminar Hall	133.76	MBA	Yes	Yes	Yes	Yes
<b>Total (G)</b>					<b>367.76</b>					
<b>PG MCA - Instructional Area</b>										
93	231	B	2	MCA Class Room - 1	75.86	MCA	Yes	Yes	Yes	Yes
94	238	B	2	MCA Class Room - 2	76.15	MCA	Yes	Yes	Yes	Yes
95	204	B	2	MCA Class Room - 3	75.00	MCA	Yes	Yes	Yes	Yes
96	207	B	2	MCA Class Room - 4	75.00	MCA	Yes	Yes	Yes	Yes
97	233	B	2	MCA Laboratory -1	76.15	MCA	Yes	Yes	Yes	Yes
98	237	B	2	MCA Laboratory -2	76.15	MCA	Yes	Yes	Yes	Yes
99	203	B	2	MCA Laboratory -3	88.83	MCA	Yes	Yes	Yes	Yes
100	239.1	B	2	Tutorial Room - 3	58.59	UG	Yes	Yes	Yes	Yes
101	232	B	2	MCA Seminar Hall	150.00	MCA	Yes	Yes	Yes	Yes
<b>Total (H)</b>					<b>751.73</b>					
<b>Common - Instructional Area</b>										
102	112 & 113	B	2	Computer Centre	305.00	Campus	Yes	Yes	Yes	Yes
103	G101	B	2	Library & Reading Room	620.10	Campus	Yes	Yes	Yes	Yes
104	315.1	B	2	Laungage Laboratory	68.00	Campus	Yes	Yes	Yes	Yes
<b>Total (F)</b>					<b>993.10</b>					
<b>Administrative Area - Built Up Area Details</b>										
105	103	A	1	Office All Inclusive	112.57	Campus	Yes	Yes	Yes	Yes
106	120	B	2	Office All Inclusive	150.00	Campus	Yes	Yes	Yes	Yes
107	121.1	B	2	Office All Inclusive	37.72	Campus	Yes	Yes	Yes	Yes
108	101	A	1	Director Cabin	38.67	Campus	Yes	Yes	Yes	Yes
109	140	B	2	Board Room -2	43.50	Campus	Yes	Yes	Yes	Yes
110	114	A	1	Store	62.51	Campus	Yes	Yes	Yes	Yes
111	117	A	1	D. Pharm HOD Cabin	22.00	Campus	Yes	Yes	Yes	Yes
112	207	A	1	Pharmacology HOD Cabin	22.00	Campus	Yes	Yes	Yes	Yes
113	106	A	1	Pharmacuetics HOD Cabin	22.00	Campus	Yes	Yes	Yes	Yes
114	123.2	B	2	Mech HOD Cabin	12.85	Campus	Yes	Yes	Yes	Yes
115	119.2	B	2	Civil HOD Cabin	11.20	Campus	Yes	Yes	Yes	Yes
116	219.2	B	2	E & TC HOD Cabin	11.20	Campus	Yes	Yes	Yes	Yes
117	223.2	B	2	CSE HOD Cabin	11.20	Campus	Yes	Yes	Yes	Yes
118	324.2	B	2	Elect. HOD Cabin	11.20	Campus	Yes	Yes	Yes	Yes
119	239.2	B	2	MCA HOD Cabin	11.20	Campus	Yes	Yes	Yes	Yes



120	301.2	B	2	FE HOD Cabin	18.72	Campus	Yes	Yes	Yes	Yes
121	301.5	B	2	PG Mech HOD Cabin	18.72	Campus	Yes	Yes	Yes	Yes
122	320.2	B	2	MBA HOD Cabin	10.00	Campus	Yes	Yes	Yes	Yes
123	101	B	2	YSPM Office	43.77	Campus	Yes	Yes	Yes	Yes
124	139	B	2	Engg Principal Cabin	34.45	Campus	Yes	Yes	Yes	Yes
125	122.1	B	2	Poly Principal Cabin	17.25	Campus	Yes	Yes	Yes	Yes
126	216	A	1	D. Pharm Exam Room	22.00	Campus	Yes	Yes	Yes	Yes
127	308	A	1	P'chemistry HoD Cabin	22.00	Campus	Yes	Yes	Yes	Yes
128	302	A	1	Faculty Room	43.93	Campus	Yes	Yes	Yes	Yes
129	317	A	1	Pharmacognosy HoD Cabin	22.00	Campus	Yes	Yes	Yes	Yes
130	122.2	B	2	FE Department Office	20.00	Campus	Yes	Yes	Yes	Yes
131	119.1	B	2	Civil Department Office	26.15	Campus	Yes	Yes	Yes	Yes
132	123.1	B	2	Mech Department Office	24.50	Campus	Yes	Yes	Yes	Yes
133	223.1	B	2	CSE Department Office	26.15	Campus	Yes	Yes	Yes	Yes
134	219.1	B	2	E & Tc Department Office	26.15	Campus	Yes	Yes	Yes	Yes
135	324.1	B	2	Elect. Department Office	25.00	Campus	Yes	Yes	Yes	Yes
136	201.3	B	2	PG Mech Department Office	24.63	Campus	Yes	Yes	Yes	Yes
137	201.2	B	2	MCA Department Office	20.01	Campus	Yes	Yes	Yes	Yes
138	320.1	B	2	MBA Department Office	25.00	Campus	Yes	Yes	Yes	Yes
139	107	B	2	Faculty Room	25.00	Campus	Yes	Yes	Yes	Yes
140	117.2	B	2	Faculty Room	25.00	Campus	Yes	Yes	Yes	Yes
141	126	B	2	Faculty Room	100.00	Campus	Yes	Yes	Yes	Yes
142	128	B	2	Faculty Room	25.00	Campus	Yes	Yes	Yes	Yes
143	206	B	2	Faculty Room	25.00	Campus	Yes	Yes	Yes	Yes
144	212.1	B	2	Faculty Room	25.00	Campus	Yes	Yes	Yes	Yes
145	214.1	B	2	Faculty Room	25.00	Campus	Yes	Yes	Yes	Yes
146	228.2	B	2	Faculty Room	33.00	Campus	Yes	Yes	Yes	Yes
147	229.2	B	2	Faculty Room	33.00	Campus	Yes	Yes	Yes	Yes
148	235	B	2	Faculty Room	25.00	Campus	Yes	Yes	Yes	Yes
149	301.3	B	2	Faculty Room	28.00	Campus	Yes	Yes	Yes	Yes
150	301.4	B	2	Faculty Room	28.00	Campus	Yes	Yes	Yes	Yes
151	307	B	2	Faculty Room	25.00	Campus	Yes	Yes	Yes	Yes
152	319	B	2	Faculty Room	37.50	Campus	Yes	Yes	Yes	Yes
153	327.2	B	2	Faculty Room	27.68	Campus	Yes	Yes	Yes	Yes
154	329.2	B	2	Faculty Room	27.68	Campus	Yes	Yes	Yes	Yes
155	336	B	2	Faculty Room	25.00	Campus	Yes	Yes	Yes	Yes
156	109	A	1	Central Stores	30.00	Campus	Yes	Yes	Yes	Yes
157	112.2	B	2	Maintenance	10.46	Campus	Yes	Yes	Yes	Yes
158	112.4	B	2	House Keeping	10.46	Campus	Yes	Yes	Yes	Yes
159	102.1	B	2	Pantry for Staff	34.45	Campus	Yes	Yes	Yes	Yes
160	101	E	4	Security Office	10.00	Campus	Yes	Yes	Yes	Yes
161	121.2	B	2	Training & Placement Office	53.06	Campus	Yes	Yes	Yes	Yes
162	239.1	B	2	SUK Exam Center	33.00	Campus	Yes	Yes	Yes	Yes
163	201.1	B	2	Exam Control Room - 1	41.48	Campus	Yes	Yes	Yes	Yes
164	301	A	1	Exam Control Room - 2	33.54	Campus	Yes	Yes	Yes	Yes
<b>Total (I)</b>					<b>1857.78</b>					

**Amenities Area - Built Up Area Details**

165	110	A	1	Gents Toilet	60.00	Campus	Yes	Yes	Yes	Yes
166	113	A	1	Ladies Toilet	60.00	Campus	Yes	Yes	Yes	Yes



167	210	A	1	Gents Toilet	60.00	Campus	Yes	Yes	Yes	Yes
168	213	A	1	Ladies Toilet	60.00	Campus	Yes	Yes	Yes	Yes
169	116	B	2	Gents Toilet	36.45	Campus	Yes	Yes	Yes	Yes
170	124	B	2	Ladies Toilet	36.45	Campus	Yes	Yes	Yes	Yes
171	216	B	2	Gents Toilet	36.45	Campus	Yes	Yes	Yes	Yes
172	224	B	2	Ladies Toilet	36.45	Campus	Yes	Yes	Yes	Yes
173	317	B	2	Gents Toilet	36.45	Campus	Yes	Yes	Yes	Yes
174	325	B	2	Ladies Toilet	36.45	Campus	Yes	Yes	Yes	Yes
175	G102	B	2	Class Room -8	150.00	Campus	Yes	Yes	Yes	Yes
176	314	A	1	Girls Common Room - 1	100.00	Campus	Yes	Yes	Yes	Yes
177	311	A	1	Boys Common Room - 1	100.00	Campus	Yes	Yes	Yes	Yes
178	112.3	B	2	Stationery Store & Reprography	11.13	Campus	Yes	Yes	Yes	Yes
179	118	B	2	Frist Aid cum sick Room	36.00	Campus	Yes	Yes	Yes	Yes
<b>Total (J)</b>					<b>855.83</b>					

**Summary Statement of All Area**

Sr. No.	B. I.	Building Name	Total Approved Area.	Sr. No.	Area Type	Area
				1	Instructional Area	12781.12
1	A	Pharmacy	5524.73	2	Administrative Area	1857.78
2	B	Engineering	13595.61	3	Amenities Area	855.83
3	C	Workshop	1116.09	4	Circulation & Other Excess Area	4741.70
<b>Total</b>			<b>20236.43</b>	<b>Total</b>		<b>20236.43</b>



  
**DIRECTOR**  
 Yashoda Technical Campus  
 Satara